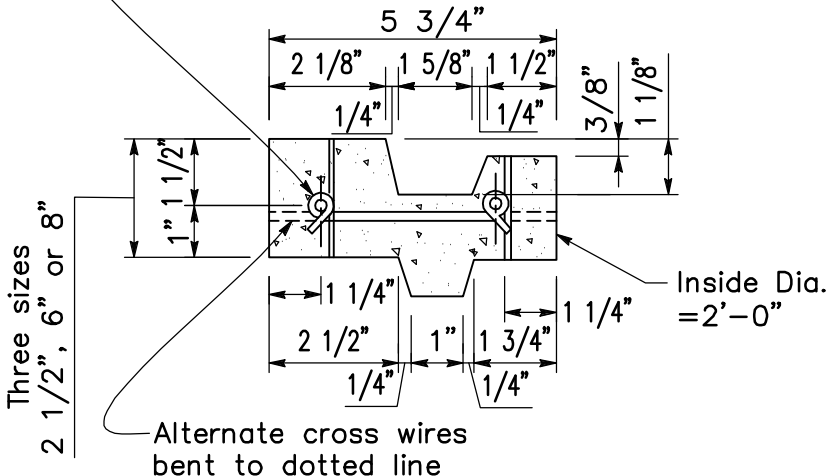


**SECTION**

2 1/2" rings shall be reinforced w/two steel hoops;  
 6" & 8" rings shall be reinforced w/four & six  
 hoops; tied w/no 14 a.s. & w. gage wire 8" o.c.

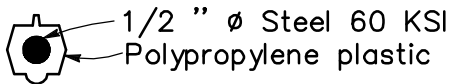


**CONCRETE RING - CROSS SECTION**

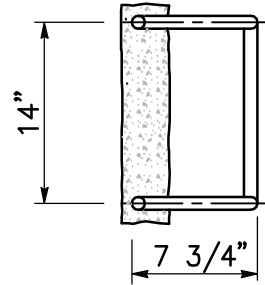
See Sheet 2 of 2 for notes and step details.

Not to scale

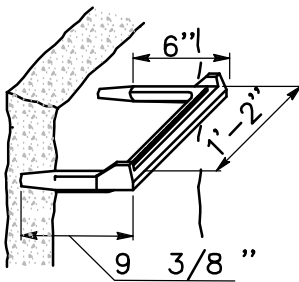
	<i>Neil Parsons</i> City Engineer	10/07/05 Date	SHEET 1 of 2	STANDARD STORM DRAIN MANHOLE SHAFT	S-3
--	--------------------------------------	------------------	-----------------	--	-----



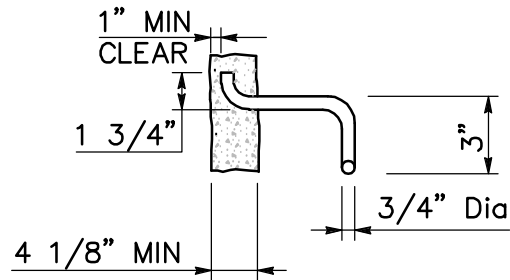
TYPICAL SECTION  
(Step Insert)



PLAN



STEP INSERT DETAIL



SECTION

BAR STEP DETAIL

NOTES

1. Joints shall be filled with mortar and neatly pointed or wiped on inside of shaft.
2. Steps shall be 3/4" round galvanized steel. Steps may be 1/2" steel with polypropylene plastic coating conforming to State Standard Plan D74C. Bar steps shall be cast-in-place.
3. Length of sections for manhole shaft may be 1'-0", 2'-0", 3'-0", or 4'-0" at the option of the contractor.
4. Manhole shall be precast reinforced concrete manhole pipe.

Not to scale



*Neil Parsons*  
City Engineer

10/07/05  
Date

SHEET  
2 of 2

STANDARD STORM  
DRAIN MANHOLE  
SHAFT

S-3